

SPRING SUMMER 2024

TIE - BOWTIE - HANKY - FOULARD - SUSPENDERS - ASCOT - HAT - CUMMERBUND

*Cartini*  
SINCE 1944

MADE IN FLORENCE

# ABOUT US

Since 1944

Cantini company starts its activity in the historical Stiozzi-Ridolfi palace, in Florence in 1944.

After having soon become a landmark for the town's fashion, Cantini started to expand to the domestic market first, and exporting to key markets like Japan and the United States the taste and elegance of made in Italy fashion.

Cantini is presently managed by Davide Martinelli, who took the company from Duccio, Vezio Cantini's grandson, who was following the path opened by his father Emilio, renovation and expansion of the brand in keeping all those traditional values of elegance, craftsmanship and fashion taste that have always market the uniqueness and success of the enterprise.

Taking into consideration quality and tradition as merchandising philosophy it has worked since the 50's in conjunction and with some of the best department and specialty store.

The exclusive and original designs, woven with state-of-the-art and updated technology in the best mills in the Como area, blends latest fashion trends with refined tradition.

The production of the company is distinguished by the accuracy and the quality of the materials.

Beside developing its own lines, Cantini produces ties under some of the most prestigious private labels.

Since 1944 Cantini has always produced very high quality Classics.

SS24 collection keep the mood but the design is relaunched with a modern aesthetic exclusive and sophisticated fabrics selection.



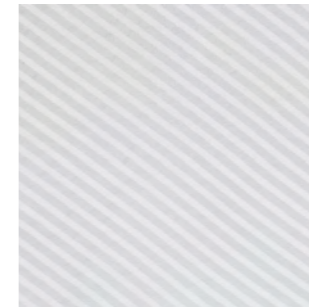
# BELLAGIO

100% silk

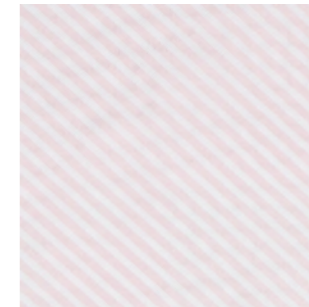
SUSPENDERS - BOWTIE - TIE



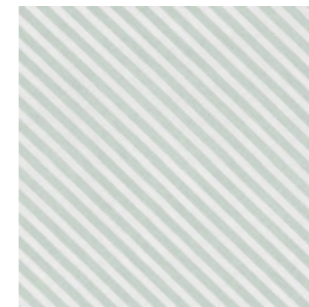
1 . CERULEAN



5 . BABY PINK



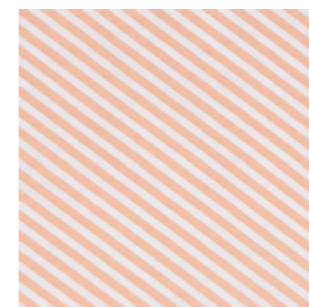
2 . SAGE



3 . MUD



4 . ORANGE



*Cantini*  
SINCE 1944

Made in Florence



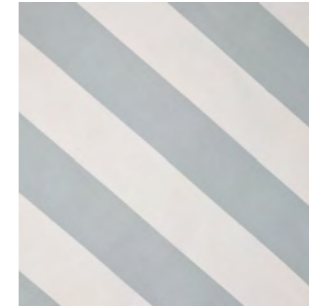
# NESSO

60 silk 40 cotton

TIE



1. WHITE/  
CERULEAN



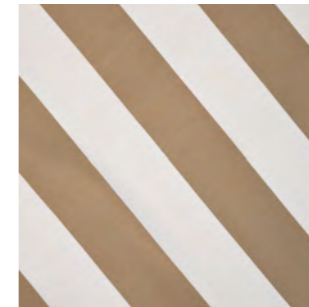
5. WHITE/  
BABY PINK



2. WHITE/  
SAGE



3. WHITE/  
MUD



4. WHITE/  
ORANGE



*Cantini*  
SINCE 1944

Made in Florence



# TORNO

60 silk 40 cotton

TIE



1 . CERULEAN



5 . BABY PINK



2 . SAGE



3 . MUD



4 . ORANGE



# NESSO

60 silk 40 cotton

TIE



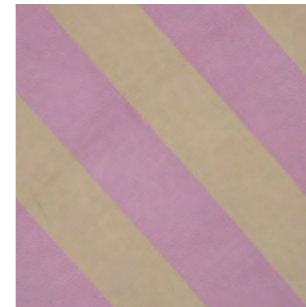
6. CREAM/  
BABY PINK



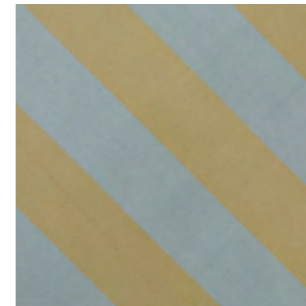
7. SAND/  
PASTEL YELLOW



8. MUD/  
VIOLET



9. KHAKI/  
CERULEAN



*Cantini*  
SINCE 1944

Made in Florence

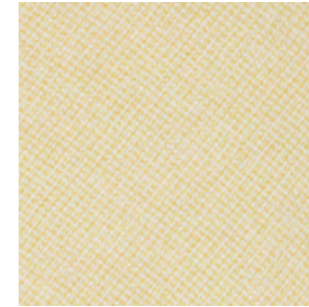


DERVIO  
100% silk

TIE



1. PASTEL  
YELLOW



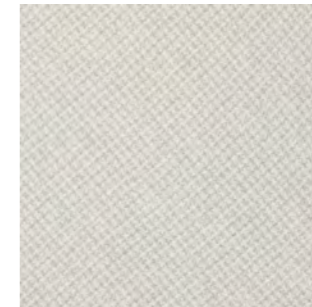
5. PASTEL  
BROWN



2. PASTEL  
ORANGE



6. LIGHT GREY



3. PASTEL  
PINK



7. AQUAMARINE



4. PASTEL  
GREEN





# COLICO

100% silk

TIE



1. PASTEL  
YELLOW



5. PASTEL  
BROWN



2. PASTEL  
ORANGE



6. LIGHT GREY



3. PASTEL  
PINK



7. AQUAMARINE



4. PASTEL  
GREEN





# BELLANO

100% silk

TIE



1. PASTEL  
YELLOW



5. PASTEL  
BROWN



2. PASTEL  
ORANGE



6. LIGHT GREY



3. PASTEL  
PINK



7. AQUAMARINE



4. PASTEL  
GREEN



SORICO  
100% silk

TIE



1. PASTEL  
YELLOW



5. PASTEL  
BROWN



2. PASTEL  
ORANGE



6. LIGHT GREY



3. PASTEL  
PINK



7. AQUAMARINE



4. PASTEL  
GREEN





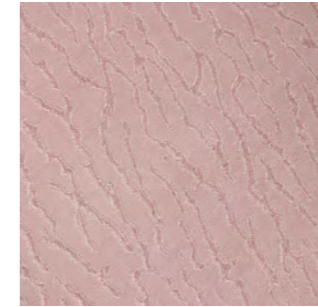
# OLIVETO

100% silk

TIE

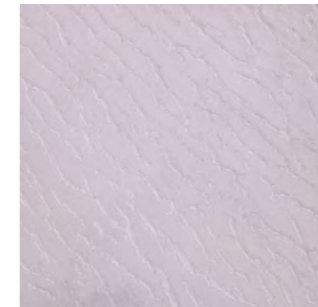
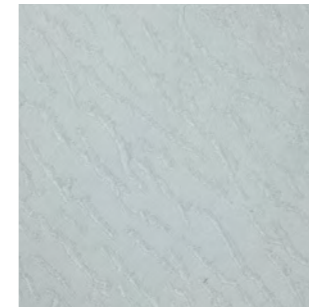


1. LIGHT GREY



5. PINK POWDER

2. CERULEAN

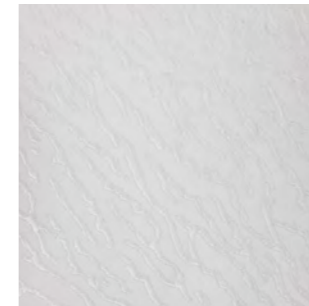


6. LIGHT LILAC

3. MINT



4. WHITE



*Cantini*  
SINCE 1944

Made in Florence



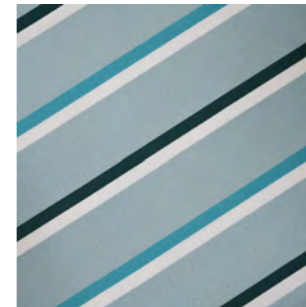
# BLEVIO

60 silk 40 cotton

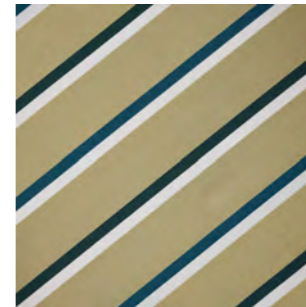
TIE



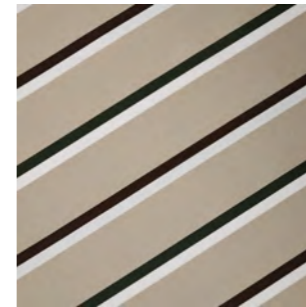
1. CERULEAN



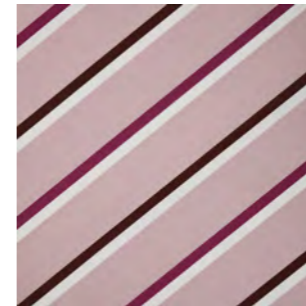
2. KHAKI



3. MUD



4. LIGHT PINK



*Cantini*  
SINCE 1944

Made in Florence



# FAGGETO

60 silk 40 cotton

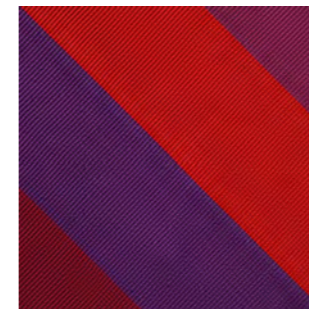
TIE



1. GREEN/YELLOW  
TONES



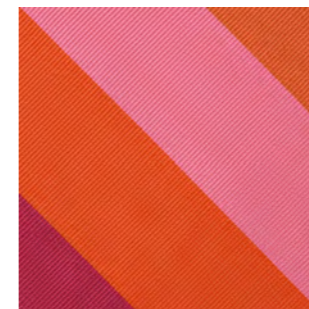
2. PURPLE/RED  
TONES



3. BLUE  
TONES



4. PINK/ORANGE  
TONES





# POGNANA

100% linen

HAT - HANKY - TIE



*Cantini*  
SINCE 1944

Made in Florence



# HAT

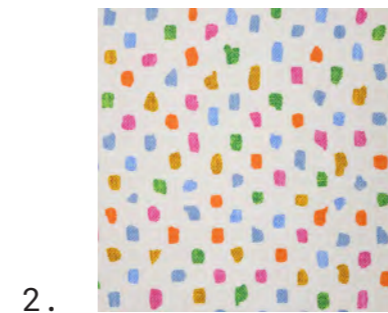
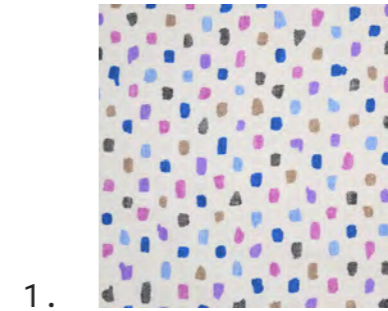
100% linen



# PALERMO

100% silk

ASCOT - BOWTIE





# MUMBAI

100% silk

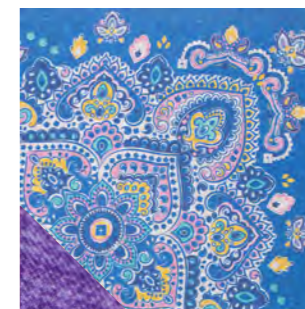
FOULARD - HANKY



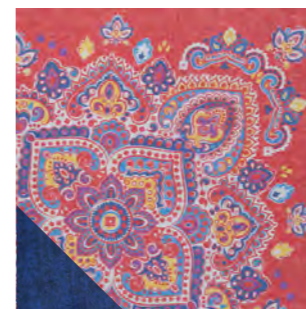
1. NAVY



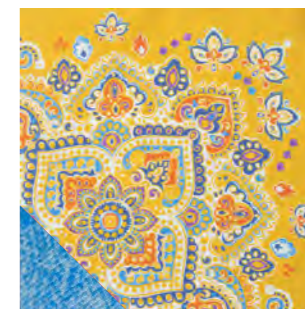
5. BLUE



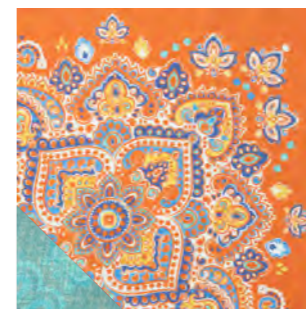
2. RED



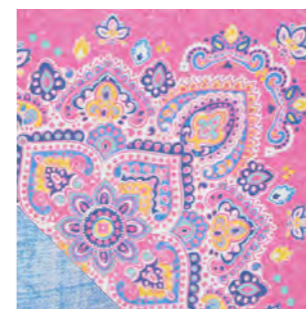
6. YELLOW



3. ORANGE



4. PINK





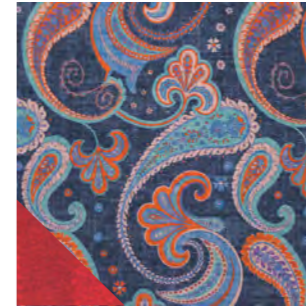
# CALCUTTA

100% silk

FOULARD - HANKY



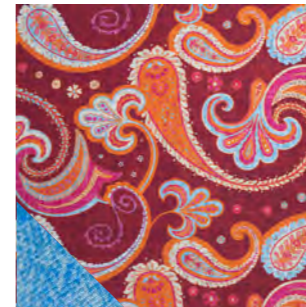
1. NAVY



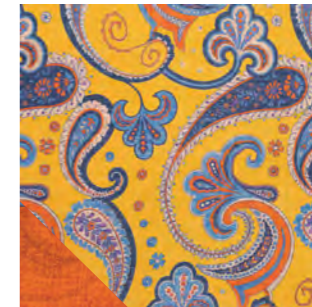
5. BLUE



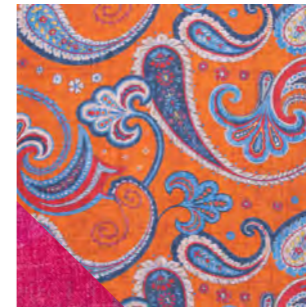
2. RED



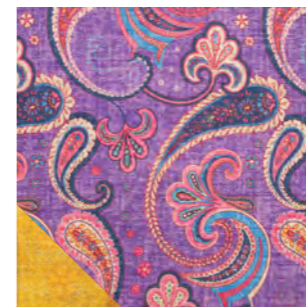
6. YELLOW



3. ORANGE



4. VIOLET

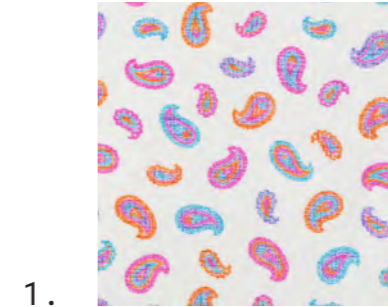




# VARENNA

100% silk

HANKY - BOWTIE - TIE



*Cantini*  
SINCE 1944

Made in Florence



# MANDELLO

100% silk

HANKY - BOWTIE - TIE



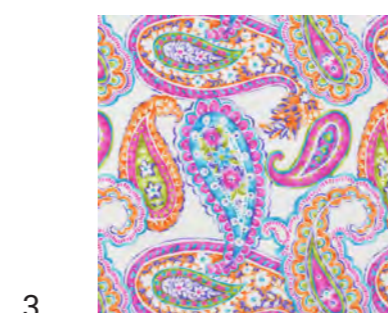
*Cantini*  
SINCE 1944

Made in Florence



LECCO  
100% silk

HANKY - BOWTIE - TIE



*Cantini*  
SINCE 1944

Made in Florence



# TARTAN

100% silk

BOWTIE - TIE



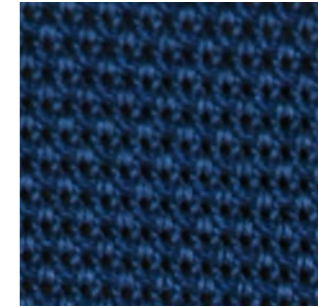


PRAGA  
100% silk

TIE

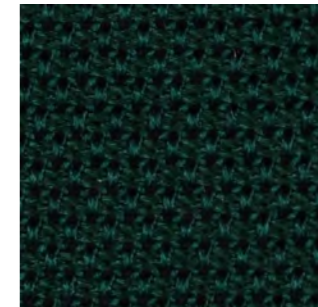


1. CHAMPAGNE



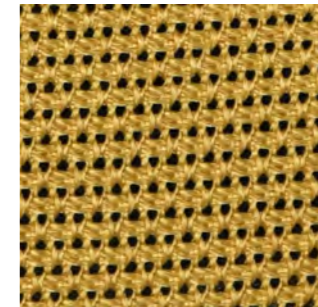
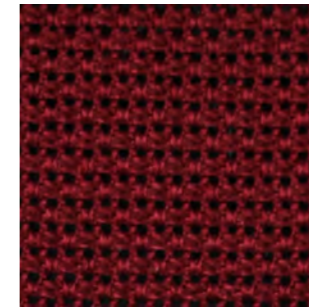
5. BLUE

2. PASTEL PINK



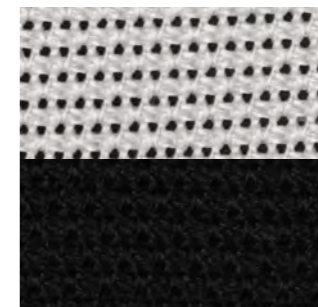
6. DEEP GREEN

3. DEEP RED



7. YELLOW

4. LIGHT BROWN



8. WHITE

9. BLACK

OTHER COLORS AVAILABLE

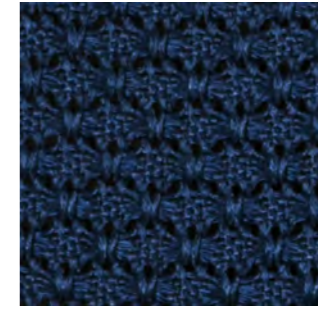
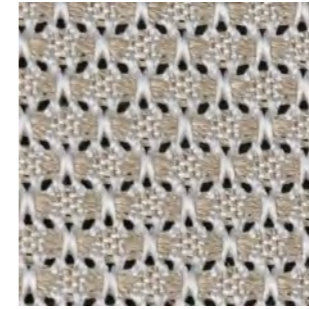


OSLO  
100% silk

TIE

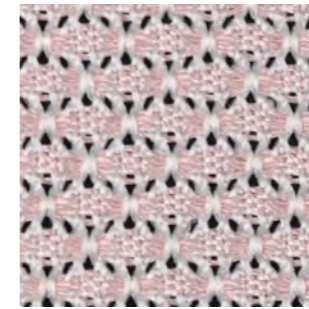


1. CHAMPAGNE



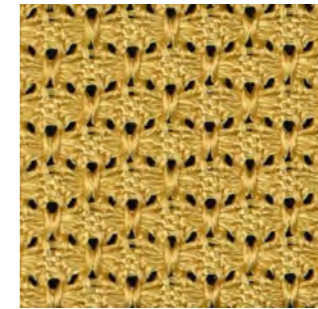
5. BLUE

2. PASTEL PINK



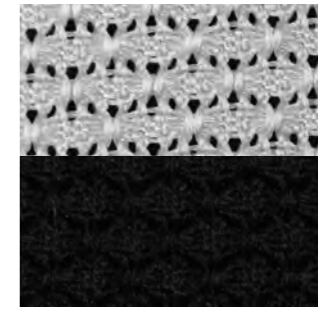
6. DEEP GREEN

3. DEEP RED



7. YELLOW

4. LIGHT BROWN



8. WHITE

9. BLACK

OTHER COLORS AVAILABLE

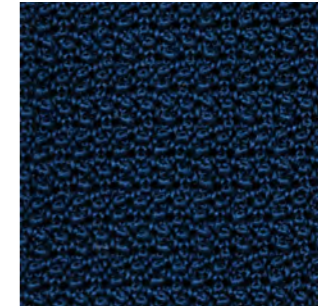
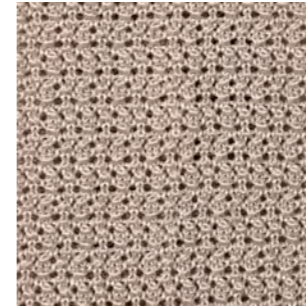


VIENNA  
100% silk

TIE

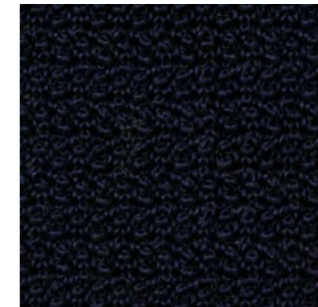
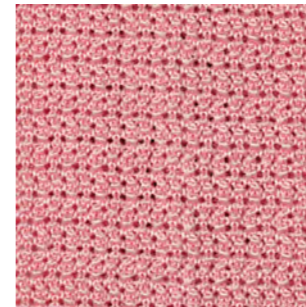


1. IVORY WHITE



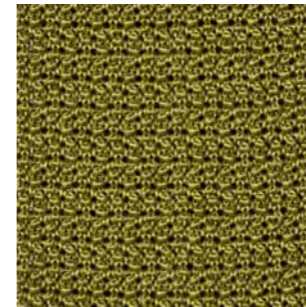
5. BLUE

2. PINK

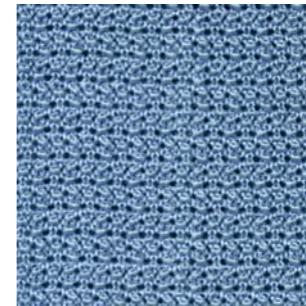


6. DARK BLUE

3. MOSS



4. CERULEAN



COMO  
100% silk

TIE

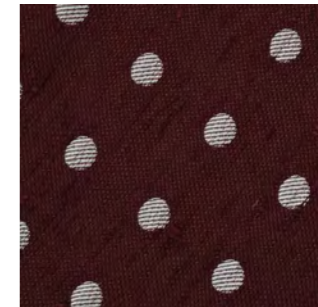


1. NIGHT BLUE



5. BISCUIT

2. CERULEAN



6. BURGUNDY

3. DARK GREEN



4. DARK BROWN



*Cantini*  
SINCE 1944

Made in Florence



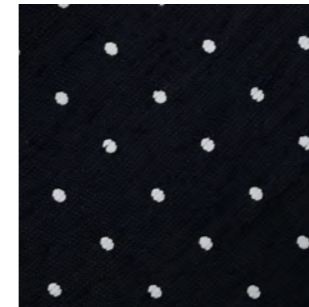
# CERNOBBIO

100% silk

TIE



1. NIGHT BLUE



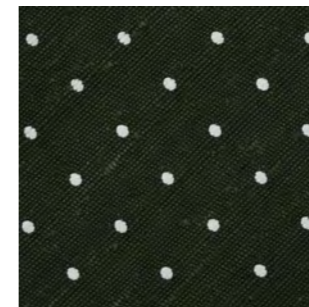
5. BISCUIT

2. CERULEAN



6. BURGUNDY

3. DARK GREEN



4. DARK BROWN



*Cantini*  
SINCE 1944

Made in Florence



# LAGLIO

100% silk

TIE



1. NIGHT BLUE



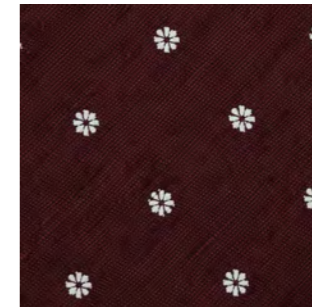
5. BISCUIT



2. CERULEAN



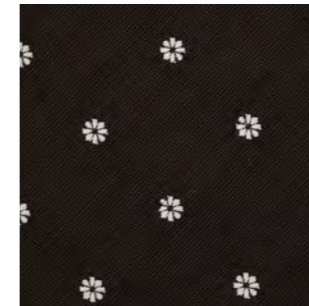
6. BURGUNDY



3. DARK GREEN



4. DARK BROWN



*Cantini*  
SINCE 1944

Made in Florence



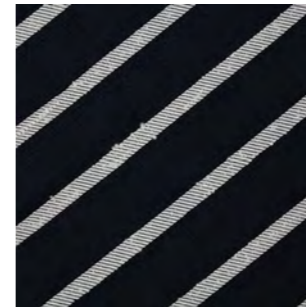
# BRIENNO

100% silk

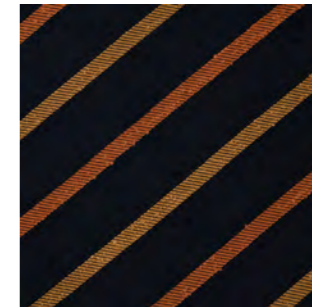
TIE



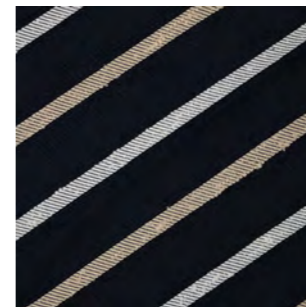
1. WHITE



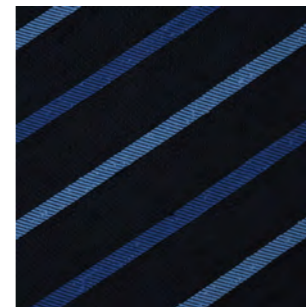
5. YELLOW



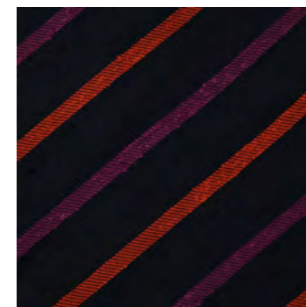
2. CREAM



3. BLUE



4. RED



*Cantini*  
SINCE 1944

Made in Florence



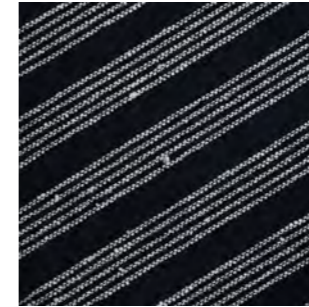
# MOLTRASIO

100% silk

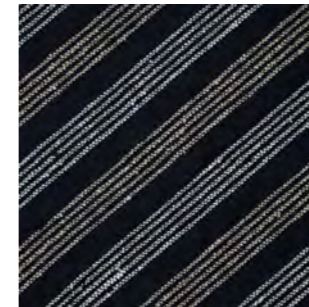
TIE



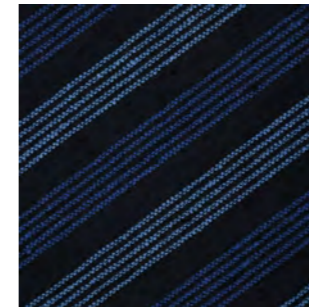
1. WHITE



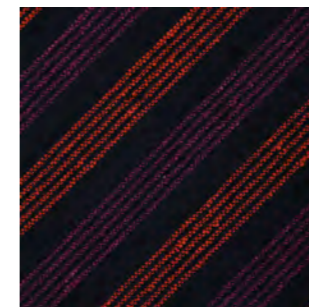
2. CREAM



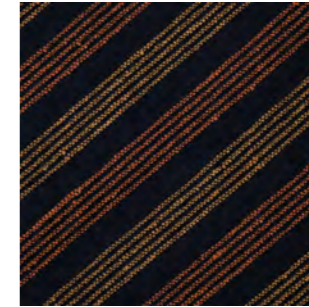
3. BLUE



4. RED



5. YELLOW



*Cantini*  
SINCE 1944

Made in Florence



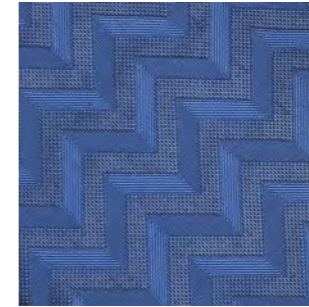
# SALONICCO

100% silk

TIE

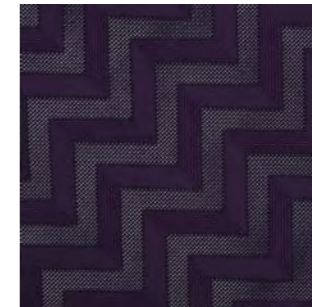


1. INDIGO



6. NIGHT BLUE

2. BOTTLE BLUE



7. AUBERGINE

3. MAGENTA



8. BURGUNDY

4. WHITE



5. BLACK



9. CHOCOLATE BROWN

*Cantini*  
SINCE 1944

Made in Florence



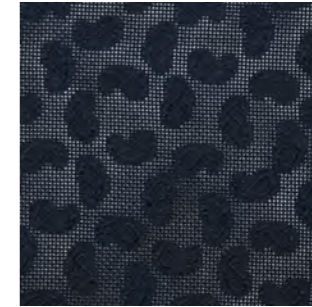
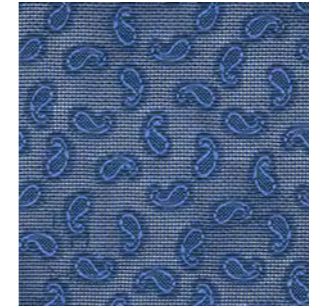
# SPARTA

100% silk

TIE

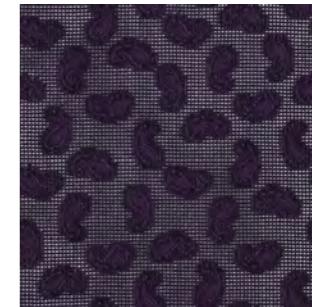


1. INDIGO



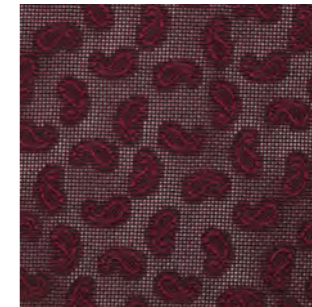
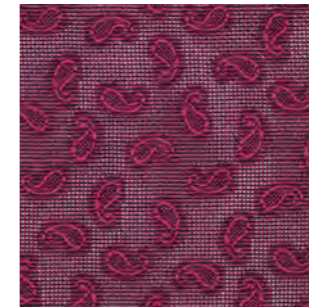
6. NIGHT BLUE

2. BOTTLE BLUE



7. AUBERGINE

3. MAGENTA

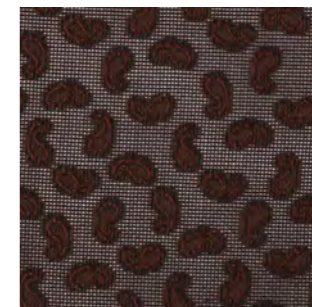


8. BURGUNDY

4. WHITE



5. BLACK



9. CHOCOLATE BROWN



ARGO  
100% silk

TIE

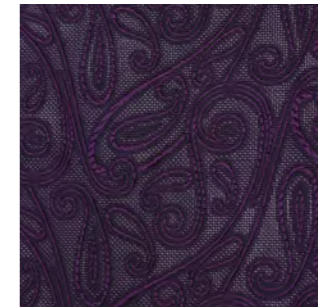
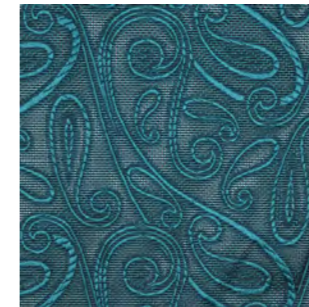


1. INDIGO



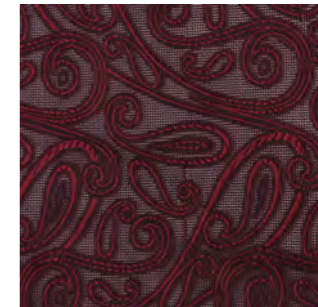
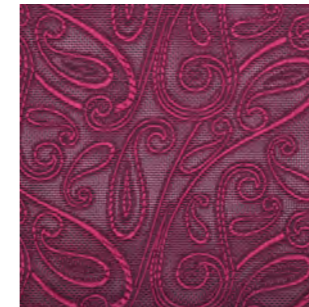
6. NIGHT BLUE

2. BOTTLE BLUE



7. AUBERGINE

3. MAGENTA



8. BURGUNDY

4. WHITE



5. BLACK



9. CHOCOLATE BROWN

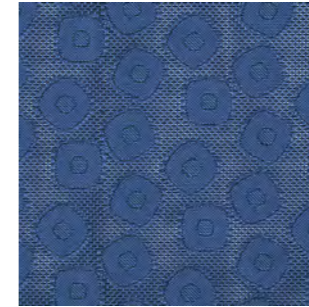


CNOSSO  
100% silk

TIE

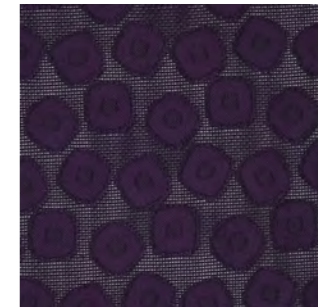
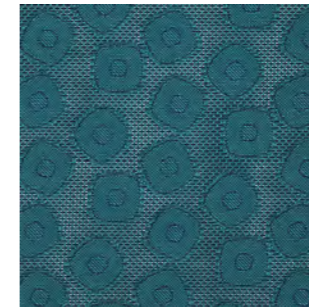


1. INDIGO



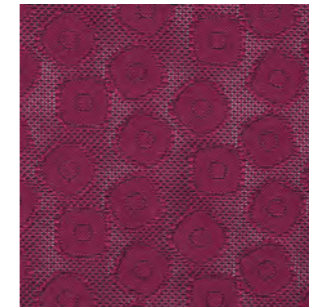
6. NIGHT BLUE

2. BOTTLE BLUE



7. AUBERGINE

3. MAGENTA



8. BURGUNDY

4. WHITE



9. CHOCOLATE BROWN

5. BLACK





ATENE  
100% silk

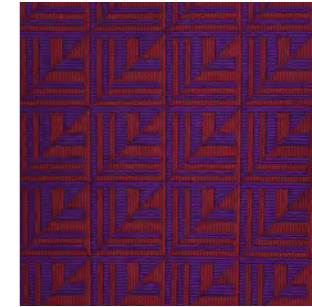
TIE



1. RED



5. PURPLE



2. PISTACHIO



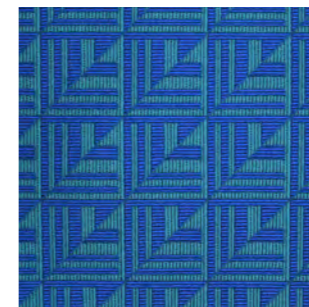
6. MUSTARD



3. LIGHT BLUE



4. ROYAL BLUE



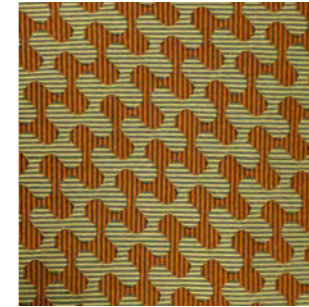


MUSSO  
100% silk

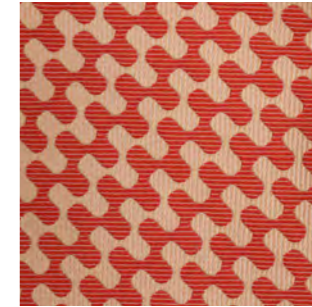
TIE



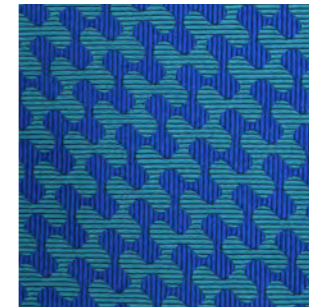
1. MUSTARD



5. RED



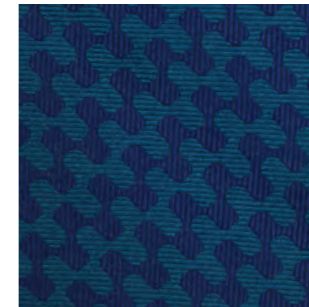
2. ROYAL BLUE



6. LIGHT BLUE



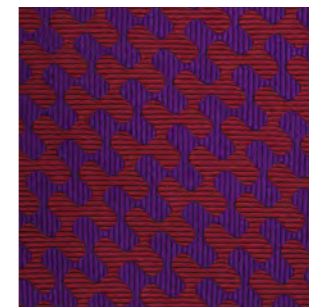
3. NAVY BLUE



7. PISTACHIO



4. PURPLE





# LIERNA

100% silk

TIE



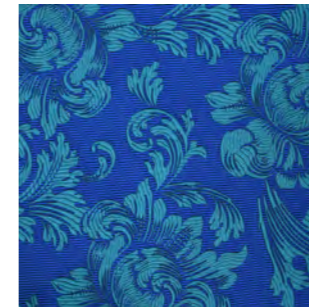
1 . MUSTARD



5 . RED



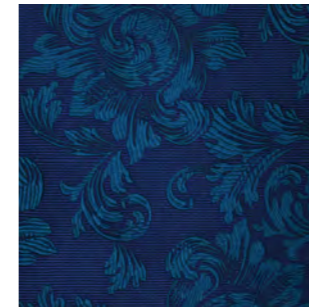
2 . ROYAL BLUE



6 . LIGHT BLUE



3 . NAVY BLUE



7 . PISTACHIO



4 . PURPLE





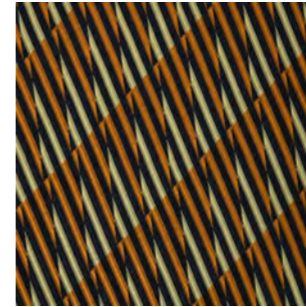
# MICENE

100% silk

TIE

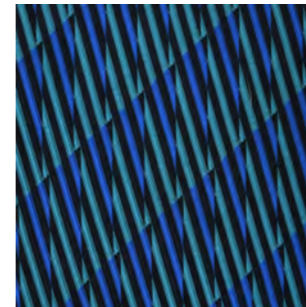


1. BLACK/  
STRAW



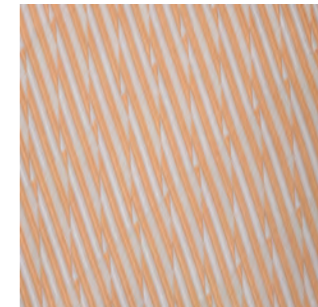
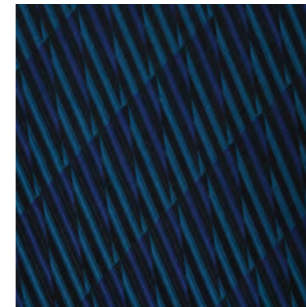
5. WHITE/  
BABY BLUE

2. BLACK/  
ROYAL BLUE



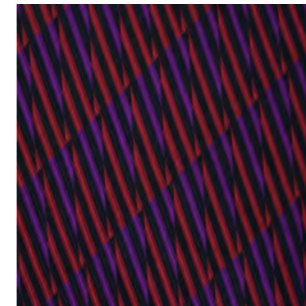
6. WHITE/  
LIME

3. BLACK/  
NAVY BLUE

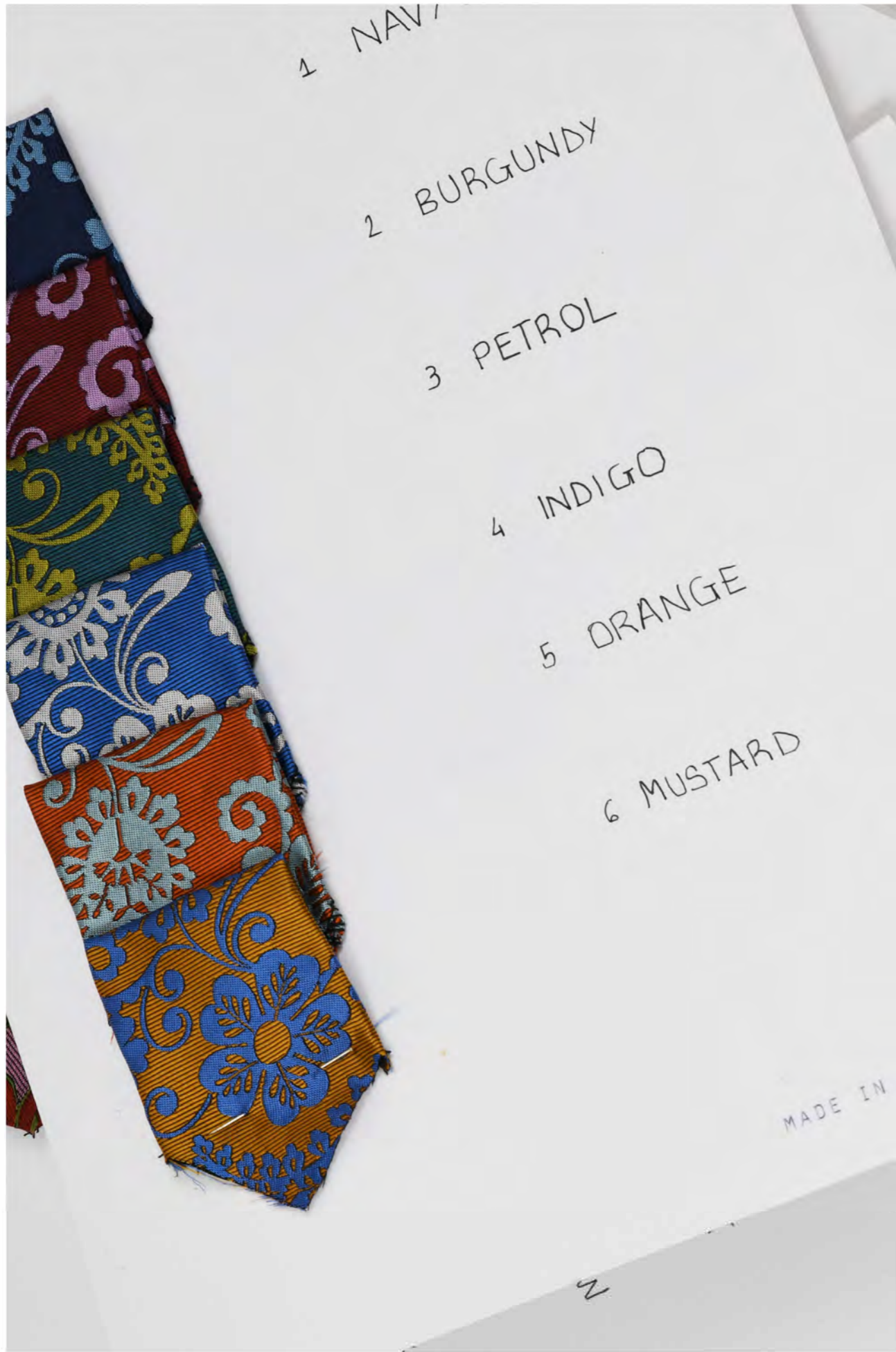


7. WHITE/  
PASTEL ORANGE

4. BLACK/  
PURPLE









# DELFI

100% silk

1. RED



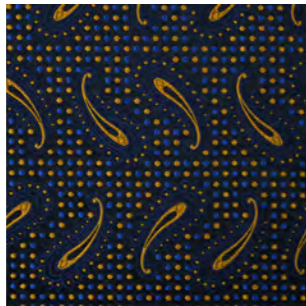
2. MAGENTA



3. PURPLE



4. BLUE



TIE

# ITACA

100% silk

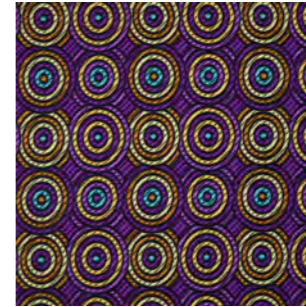
1. RED



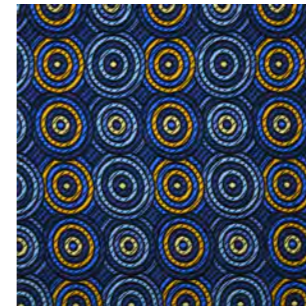
2. MAGENTA



3. PURPLE



4. BLUE



TIE



# MILETO

100% silk

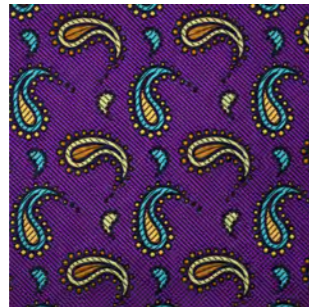
1. RED



2. MAGENTA



3. PURPLE



4. BLUE



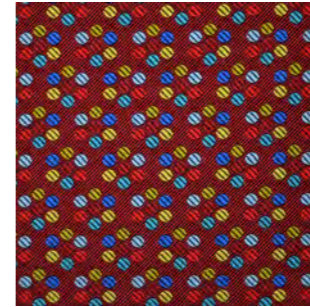
TIE

# CARTAGINE

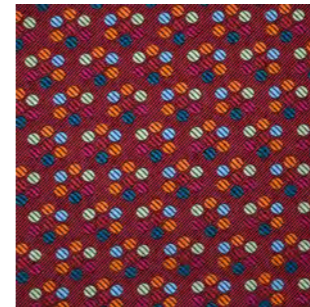
100% silk

TIE

1. RED



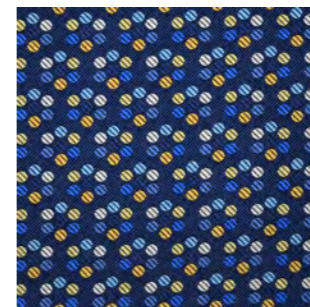
2. MAGENTA



3. PURPLE



4. BLUE





# BISANZIO

100% silk

TIE

# CORINTO

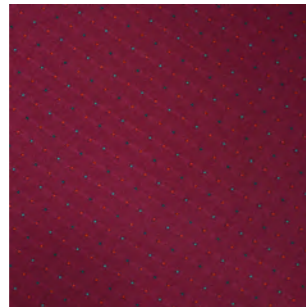
80 silk 20 polyester

TIE

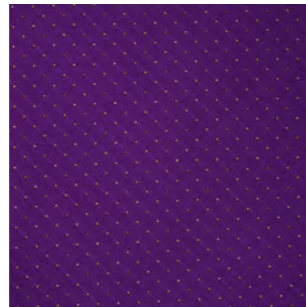
1. RED



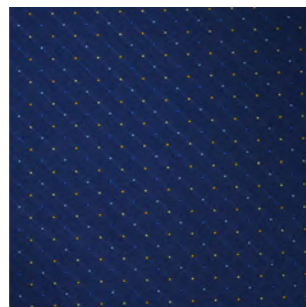
2. MAGENTA



3. PURPLE



4. BLUE



1. CHAMPAGNE



2. LIGHT ORANGE



3. PINK POWDER



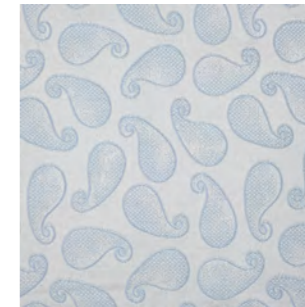
4. PISTACHIO



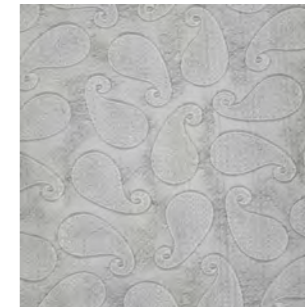
5. MINT



6. BABY BLUE



7. LIGHT GREY





# PANAREA

100% silk

TIE

# TEBE

54 cotton 46 silk

TIE

1. GREEN/  
ORANGE



5. CIANO/  
VIOLET



2. PURPLE/  
FUCSIA



6. YELLOW/  
ROYAL BLUE



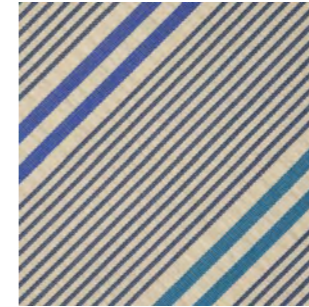
3. CERULEAN/  
NAVY BLUE



4. NAVY BLUE/  
RED



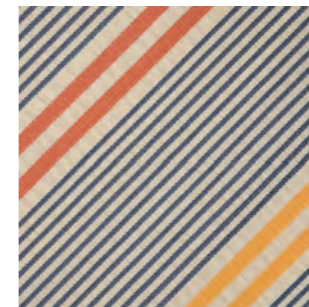
1. BLUE



2. RED



3. YELLOW





# ROMA

100% silk

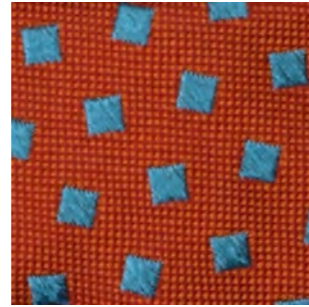
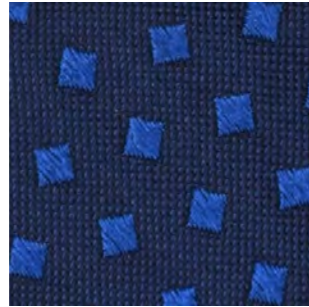
TIE

# SIRACUSA

100% silk

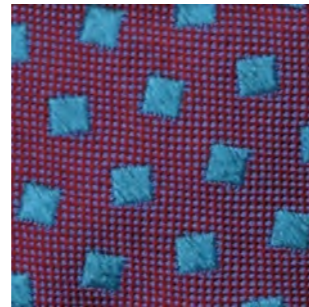
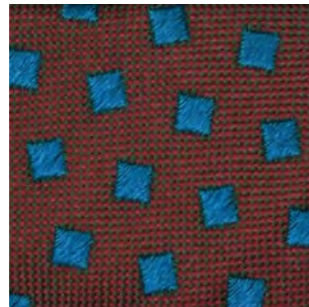
TIE

1. BLUE



5. ORANGE /  
PETROL

2. BROWN /  
PETROL



6. MAGENTA /  
PETROL

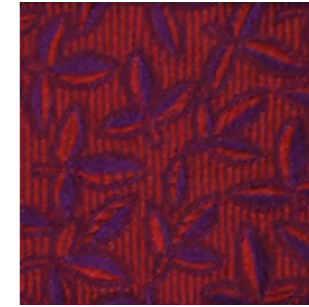
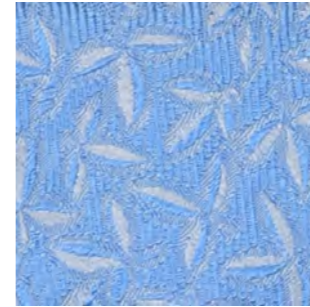
3. PURPLE /  
BLUE



4. RED /  
BLUE

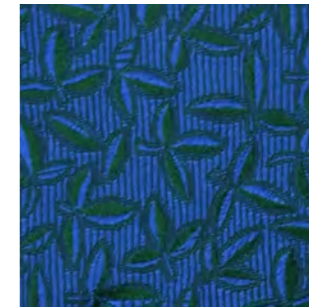


1. CERULEAN



5. RED /  
PURPLE

2. INDIGO /  
PINK

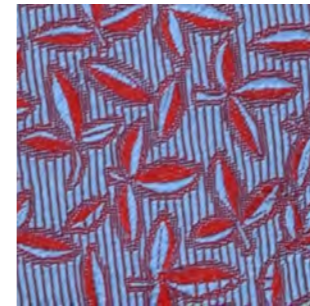


6. GREEN /  
INDIGO

3. MAGENTA /  
PINK



4. CERULEAN /  
RED



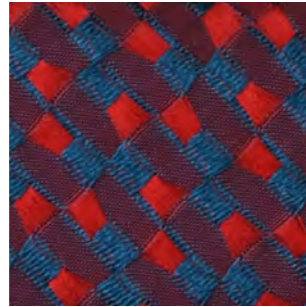


# ALESSANDRIA

100% silk

TIE

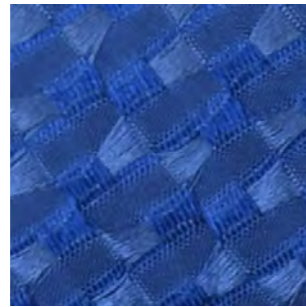
1. RED/  
PETROL



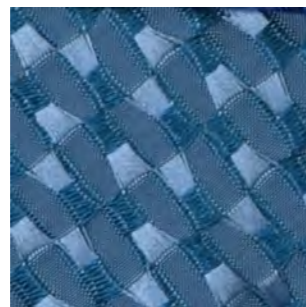
2. CERULEAN



3. ROYAL BLUE



4. PETROL



# CRETA

100% silk

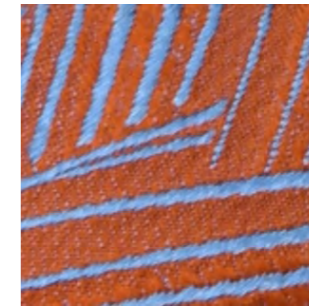
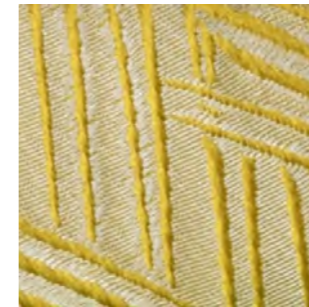
TIE

1. ORANGE



5. INDIGO/  
YELLOW

2. YELLOW



6. ORANGE/  
LIGHT BLUE

3. ACID GREEN



7. RED/  
ROYAL BLUE

4. LIGHT BLUE





# CATANIA

100% silk

TIE

# TRAPANI

100% silk

TIE

1. INDIGO



5. ORANGE

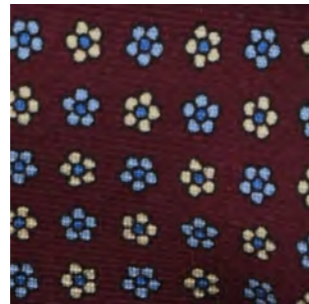
2. MILITARY GREEN



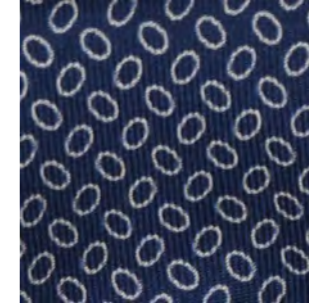
3. WHITE



4. BURGUNDY

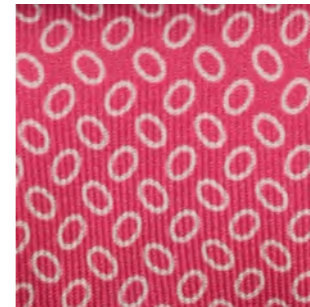


1. CERULEAN



5. NIGHT BLUE

2. FUCSIA



3. GREEN



4. LILAC





# AGRIGENTO

100% silk

TIE

# NAPOLI

100% silk

TIE

1. KHAKI



5. PINK



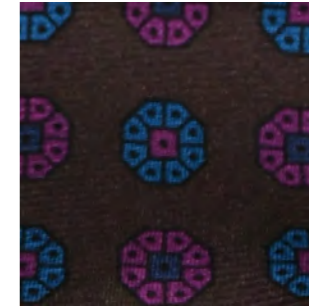
2. NAVY BLUE



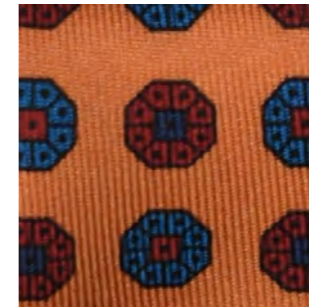
1. BURGUNDY



5. BROWN



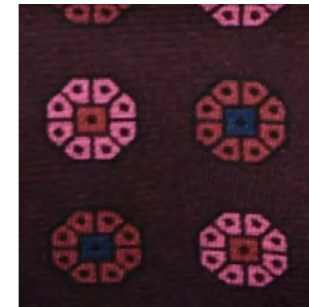
2. ORANGE



3. CERULEAN



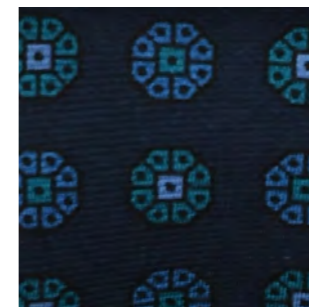
3. PRUNE



4. SKY BLUE



4. NIGHT BLUE





# LECCE

100% silk

TIE

# BARI

100% silk

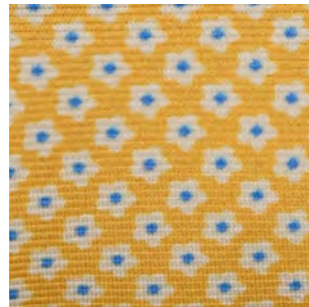
TIE

1.FUCSIA



5.NAVY BLUE

2.YELLOW



3.WHITE



4.SCARLET RED

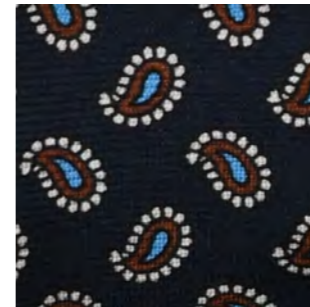


1.NAVY

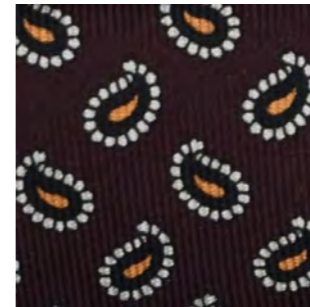


5.RED

2.NIGHT BLUE



3.BROWN



4.ROYAL BLUE





# GENOVA

100% silk

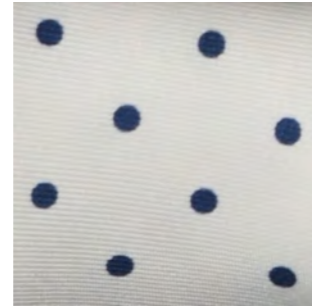
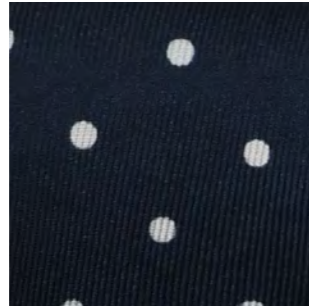
TIE

# BORMIO

100% silk

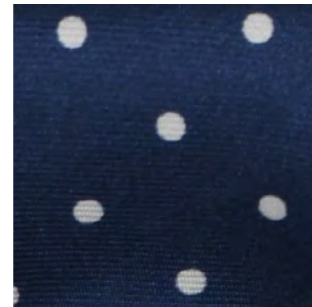
TIE

1. NIGHT BLUE



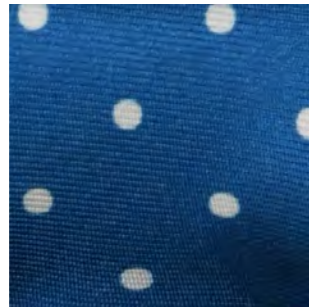
5. WHITE

2. BURGUNDY

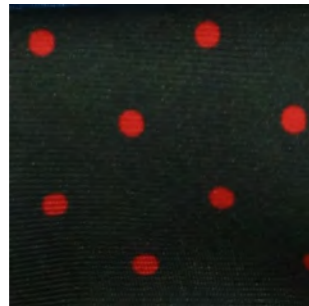


6. NAVY BLUE

3. ROYAL BLUE



4. MILITARY GREEN



1. RED



5. NAVY BLUE

2. MAGENTA



6. DARK BROWN

3. INDIGO



4. BOTTLE BLUE





# MESSINA

100% silk

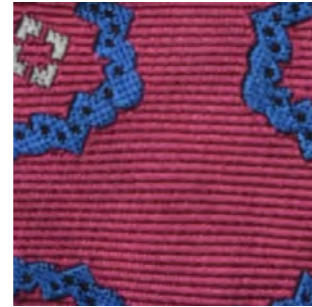
TIE

# LIONE

100% silk

TIE

1. NIGHT BLUE



5. DARK PINK

1. NAVY BLUE



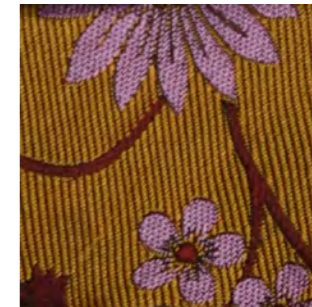
5. VIOLET

2. RED



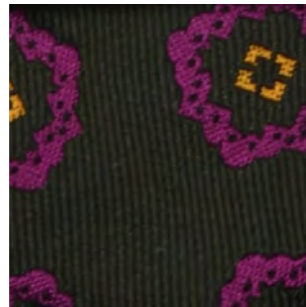
6. INDIGO

2. ORANGE



6. MUSTARD

3. MILITARY GREEN



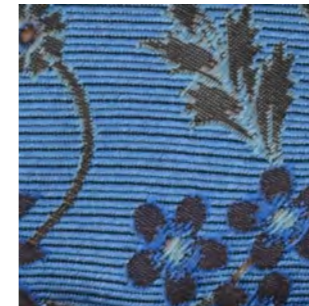
3. INDIGO



4. BISCUIT



4. CERULEAN





# BERLINO

100% silk

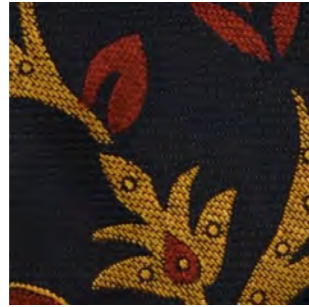
TIE

# AMSTERDAM

100% silk

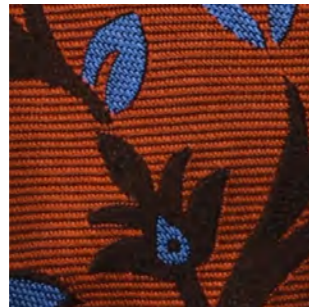
TIE

1. NIGHT BLUE



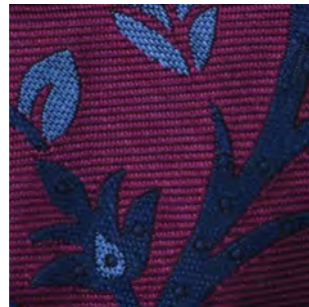
5. YELLOW

2. ORANGE

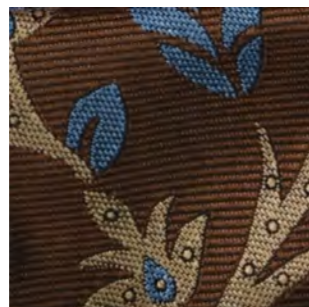


6. PINK POWDER

3. VIOLET



4. BISCUIT

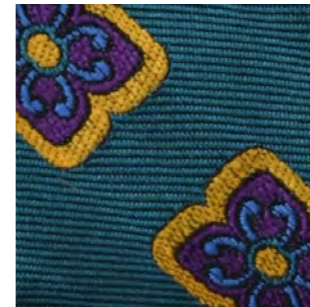


1. NAVY BLUE

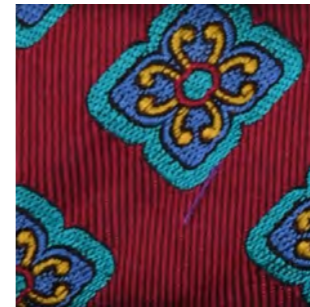


5. PURPLE

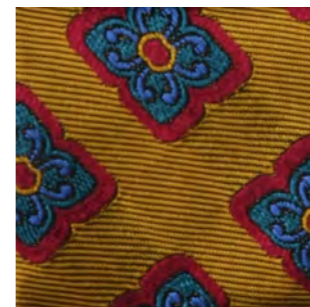
2. BOTTLE BLUE



3. CHERRY



4. MUSTARD





# MADRID

100% silk

TIE

# PONZA

100% silk

TIE

1. NAVY BLUE



5. MAGENTA

2. INDIGO



6. MUSTARD

3. RED



4. PETROL



1. NAVY BLUE



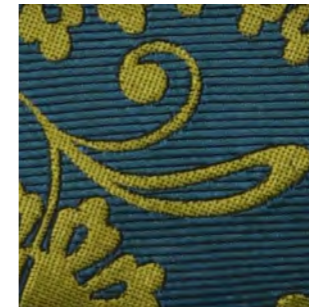
5. ORANGE

2. BURGUNDY



6. MUSTARD

3. PETROL



4. INDIGO





# OTRANTO

100% silk

TIE

# ZANTE

100% silk

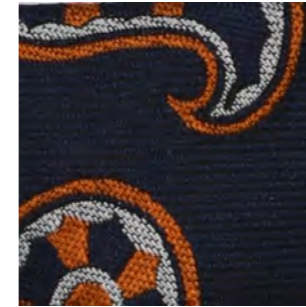
TIE

1. NIGHT BLUE



5. MAGENTA

1. NIGHT BLUE



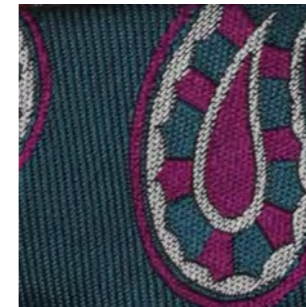
5. INDIGO

2. BURGUNDY



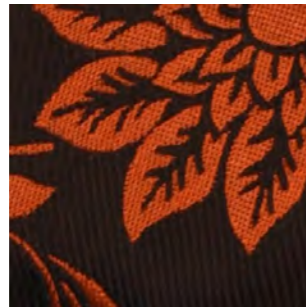
6. ORANGE  
SUNFLOWER

2. PETROL



6. LIGHT LILAC

3. BROWN



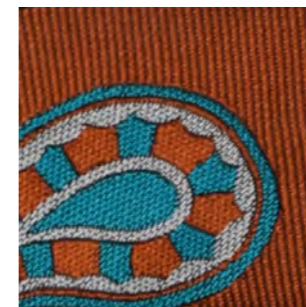
3. CHERRY



4. INDIGO



4. RUST





# PISA

100% silk

TIE

# FIRENZE

100% silk

TIE

1. NIGHT BLUE



5. BOTTLE BLUE

1. NAVY BLUE



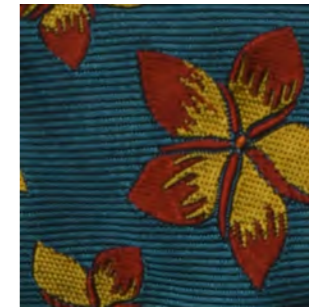
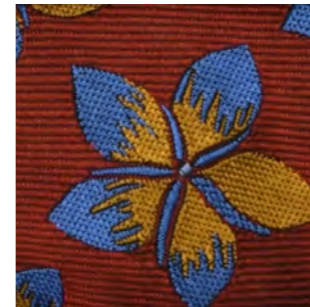
5. MUSTARD

2. DARK ORANGE



6. INDIGO

2. DARK ORANGE



6. PETROL

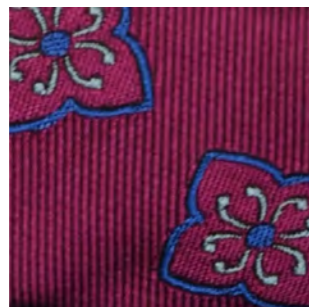
3. MUSTARD



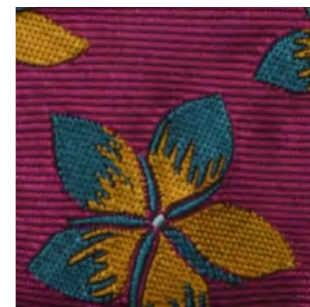
3. GREEN



4. MAGENTA



4. MAGENTA





# LONDRA

100% silk

TIE

# BARCELLONA

100% silk

TIE

1. NIGHT BLUE



5. YELLOW

2. VIOLET

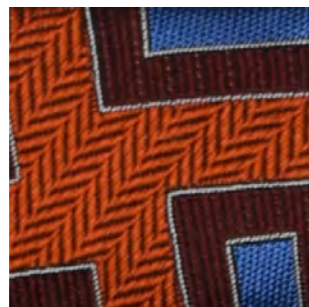


6. GREEN

3. MAGENTA



4. ORANGE

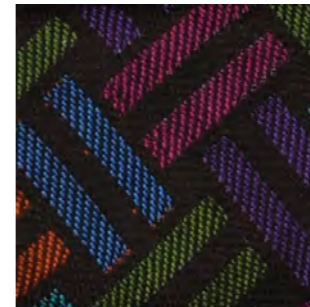


1. NIGHT BLUE



5. YELLOW

2. DARK BROWN



6. PURPLE

3. BURGUNDY



4. INDIGO





# LISBONA

100% silk

TIE

# PARIGI

100% silk

TIE

1. NIGHT BLUE



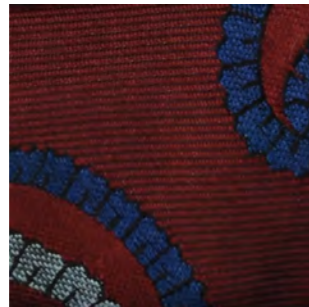
5. MAGENTA

1. NIGHT BLUE



5. BISCUIT

2. BURGUNDY



6. PETROL

2. BURGUNDY



3. INDIGO



3. PETROL



4. MUSTARD



4. INDIGO





# SIENA

100% silk

TIE

# TOKYO

100% silk

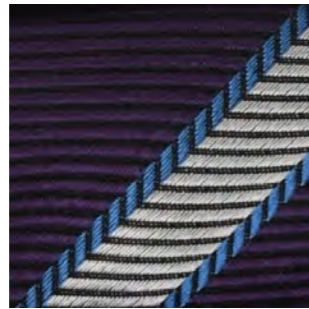
TIE

1. NIGHT BLUE

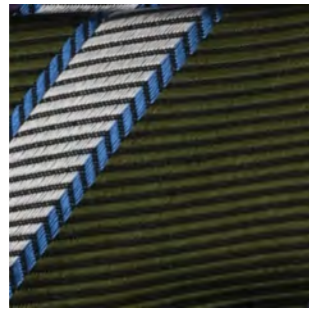


5. BROWN

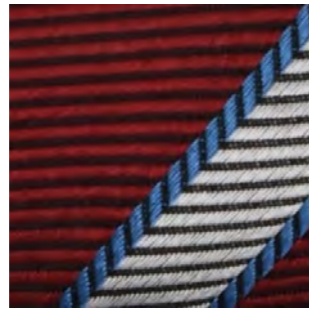
2. AUBERGINE



3. SAGE



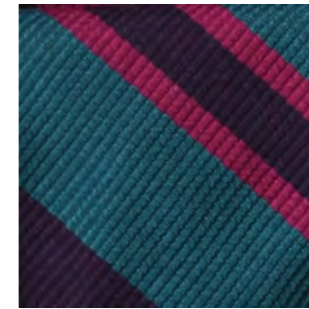
4. BURGUNDY



1. DARK BROWN



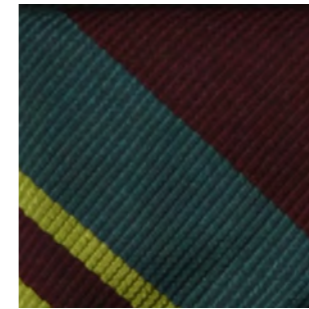
2. AUBERGINE



3. DEEP GREEN



4. DEEP BURGUNDY



5. GRAPHITE



6. SAND





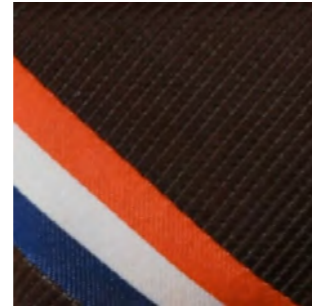
MILANO  
100% silk

TIE

LERICI  
100% silk

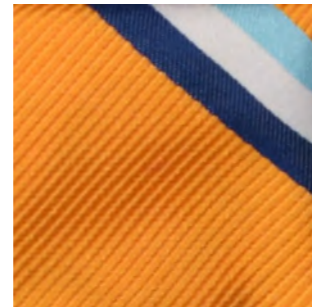
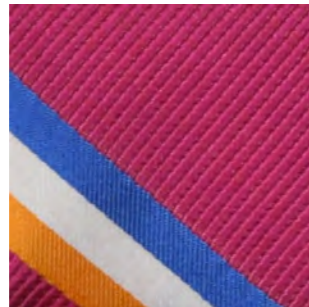
TIE

1. ROYAL BLUE



5. DARK BROWN

2. FUCSIA

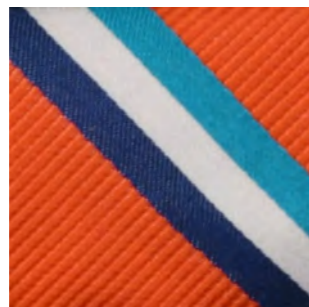


6. YELLOW

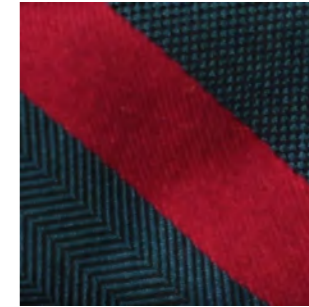
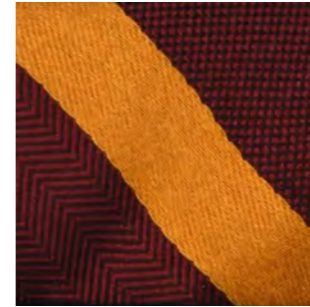
3. GREEN



4. ORANGE

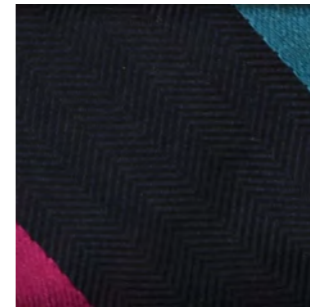


1. BURGUNDY



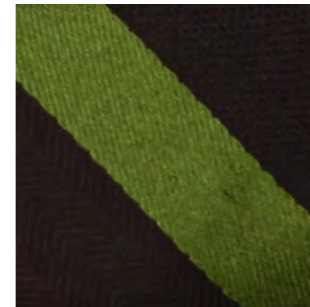
5. PETROL

2. NIGHT BLUE

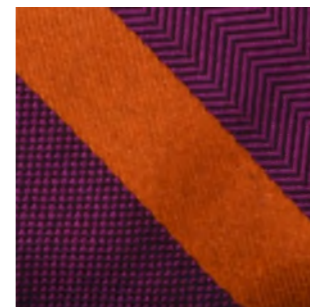


6. STRAW

3. DARK BROWN



4. VIOLET





# CAPRI

100% silk

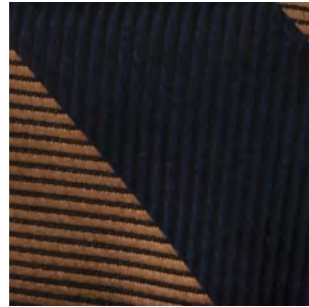
TIE

# NOTO

100% silk

TIE

1. LIGHT BROWN

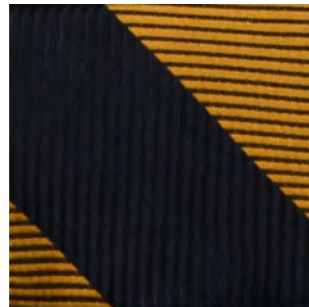


5. GREEN

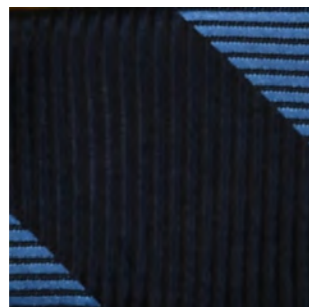
2. PURPLE



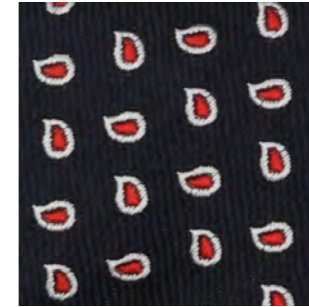
3. STRAW



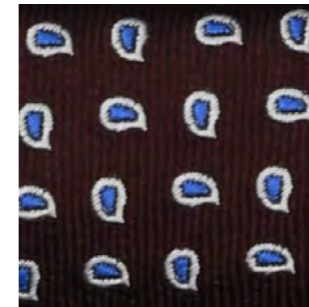
4. LIGHT BLUE



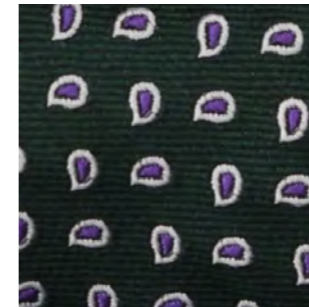
1. NIGHT BLUE



2. BURGUNDY



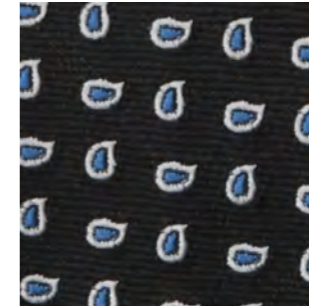
3. DARK GREEN



4. BROWN



5. GRAPHITE





# CREMA

100% silk

TIE

# ALASSIO

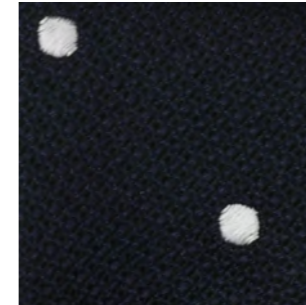
100% silk

TIE

1. NIGHT BLUE



1. NIGHT BLUE



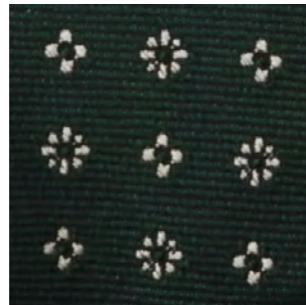
2. BURGUNDY



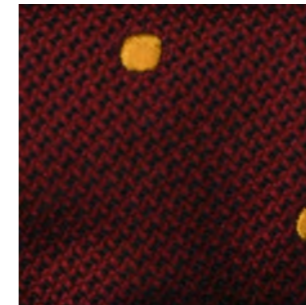
2. DARK BROWN



3. DARK GREEN



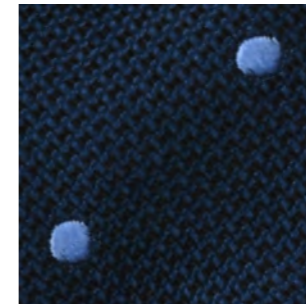
3. RED



4. DARK BROWN



4. NAVY BLUE





LUCCA  
100% silk

TIE

1. NIGHT BLUE



5. AUBERGINE



2. BURGUNDY



3. DARK BROWN



4. DARK GREEN



*Cantini*  
SINCE 1944

Made in Florence

MADE IN ITALY



# THE CLASSICS

100% silk



# REGIMENTAL

100% silk

TIE



The REGIMENTAL ties  
are originated in  
Great Britain.

To identify  
themselves in battle,  
British soldiers used  
their regimental  
colors on their  
company flags and  
silk patches. When  
not on duty, these  
soldiers proudly wore  
the regimental colors  
on their ties.

Later, around the  
1920s, these tie  
models also began  
to be used in  
different contexts  
such as for attending  
private clubs or  
universities.

From that moment on  
it will also begin  
to be used for semi-  
formal contexts,  
making the regimental  
tie synonymous with  
elegance and class  
all over the world.

TIES MADE WITH  
ORIGINAL ENGLISH  
DESIGNS

*Cantini*  
SINCE 1944

Made in Florence

ST. MORITZ  
100% silk

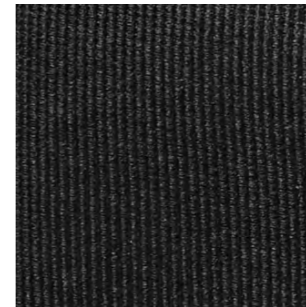
BOWTIE



1. SATIN



2. GROS GRAIN





# NEW YORK

100% silk

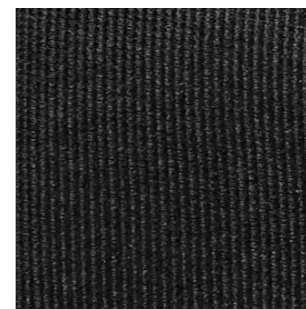
BOWTIE



1. SATIN



2. GROS GRAIN



*Cantini*  
SINCE 1944

Made in Florence

# CHICAGO

100% silk

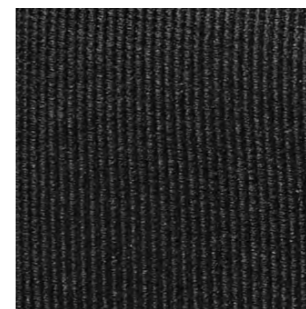
CUMMERBUND



1. SATIN



2. GROS GRAIN



*Cantini*  
SINCE 1944

Made in Florence



THANK YOU

*Cantini*  
SINCE 1944

via del padule 5a  
50018 scandicci, firenze - italia

+39 055 606615  
info@cantinities.it

www.cantinifirenze.com  
@cantinifirenze